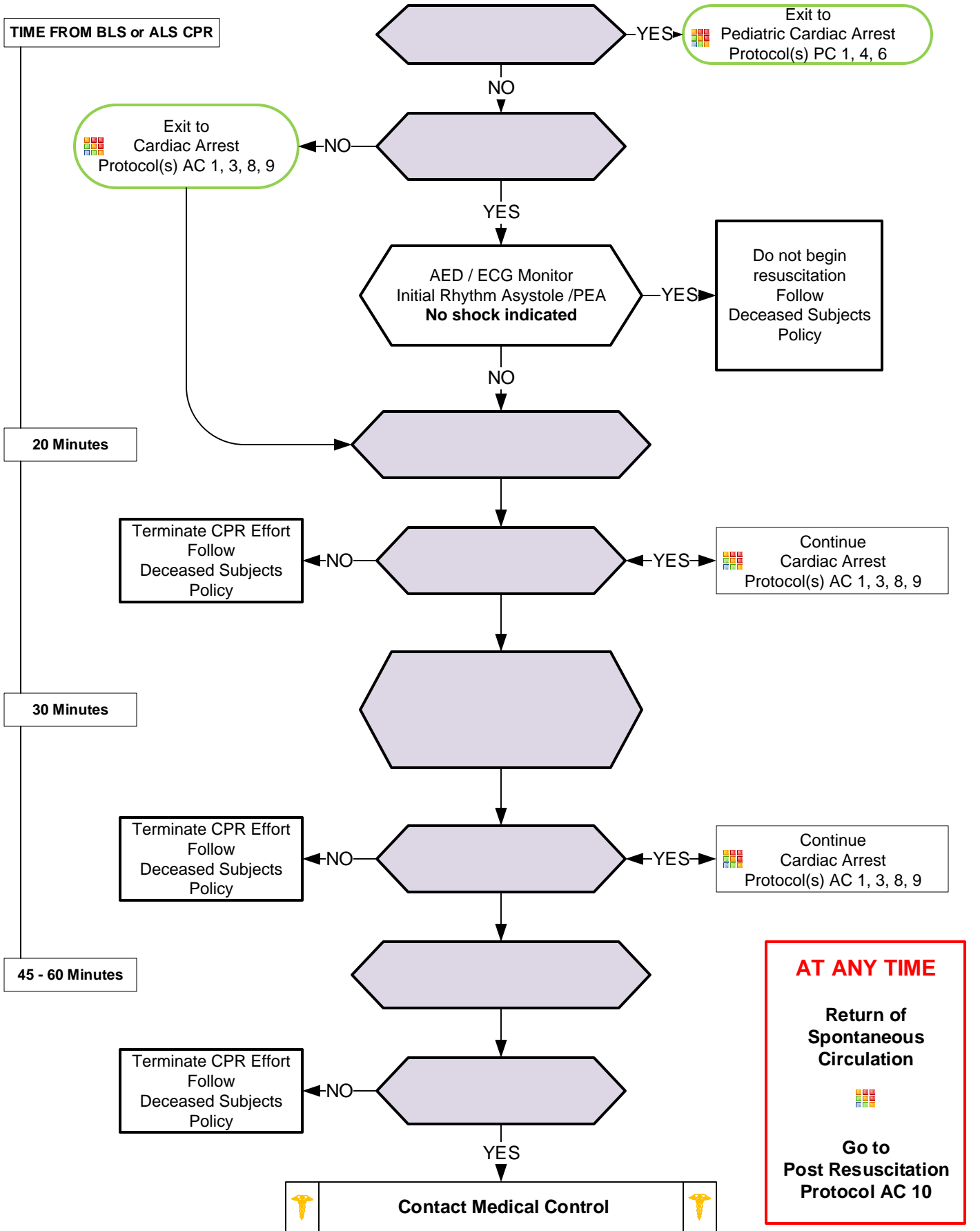




On Scene Resuscitation Termination of CPR (Optional)





On Scene Resuscitation / Termination of CPR

Pearls

- **General approach:**
 1. Determine if a terminal disease is involved?
 2. Is there an advanced directive such as a DNR / MOST form?
 3. Did the patient express to your historian any desires regarding resuscitation and if so what measures?
 4. Remember a living will is not a DNR.
- Obtain a history while resuscitation efforts are ongoing. Determine the most legitimate person on scene as your information source such as a spouse, child, or sibling or Durable Health Care Power of Attorney.
- Basic and Advanced Life Support may use for treatment decisions.