



# Fever / Infection Control

## History

- Age
- Duration of fever
- Severity of fever
- Past medical history
- Medications
- Immunocompromised (transplant, HIV, diabetes, cancer)
- Environmental exposure
- Last acetaminophen or ibuprofen

## Signs and Symptoms

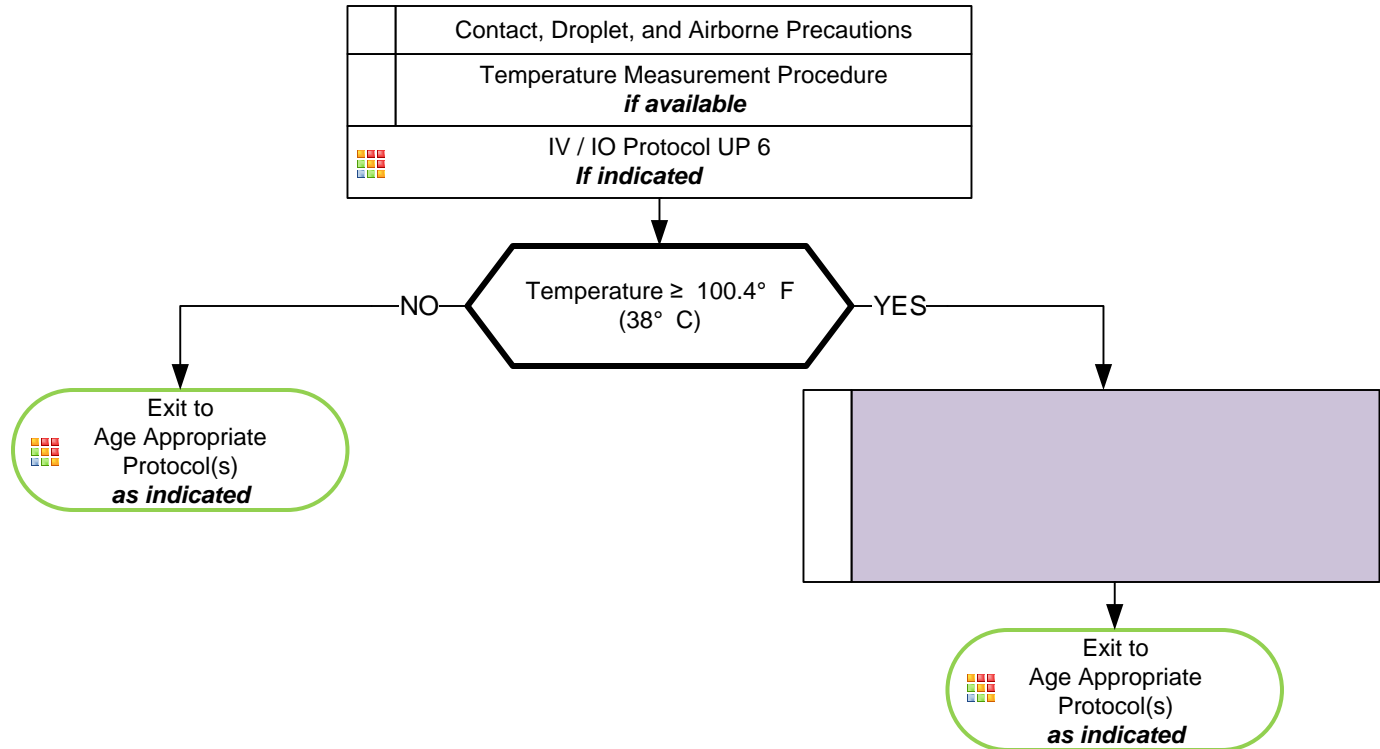
- Warm
- Flushed
- Sweaty
- Chills/Rigors

### Associated Symptoms (Helpful to localize source)

- myalgias, cough, chest pain, headache, dysuria, abdominal pain, mental status changes, rash

## Differential

- Infections / Sepsis
- Cancer / Tumors / Lymphomas
- Medication or drug reaction
- Connective tissue disease
  - Arthritis
  - Vasculitis
- Hyperthyroidism
- Heat Stroke
- Meningitis



Universal Protocol Section

## Pearls

- **Recommended Exam: Mental Status, Skin, HEENT, Neck, Heart, Lungs, Abdomen, Back, Extremities, Neuro**
- Febrile seizures are more likely in children with a history of febrile seizures and with a rapid elevation in temperature.
- **Droplet precautions:**
  - Include standard PPE plus a standard surgical mask for providers who accompany patients in the back of the ambulance and a surgical mask or NRB O2 mask for the patient.
  - This level of precaution should be utilized when influenza, meningitis, mumps, streptococcal pharyngitis, and other illnesses spread via large particle droplets are suspected.
  - A patient with a potentially infectious rash should be treated with droplet precautions.
- **Airborne precautions:**
  - Include standard PPE plus utilization of a gown, change of gloves after every patient contact, and strict hand washing precautions.
  - This level of precaution is utilized when multi-drug resistant organisms (e.g. MRSA), scabies, or zoster (shingles), or other illnesses spread by contact are suspected.
- **All-hazards precautions:**
  - Include standard PPE plus airborne precautions plus contact precautions.
  - This level of precaution is utilized during the initial phases of an outbreak when the etiology of the infection is unknown or when the causative agent is found to be highly contagious (e.g. SARS).
- All patients should have drug allergies documented prior to administering pain medications.
- Allergies to NSAIDs (non-steroidal anti-inflammatory medications) are a contraindication to Ibuprofen. Do not give to patients who have renal disease or renal transplant.
- NSAIDs should not be used in the setting of environmental heat emergencies.
- **Do not** give aspirin to a child, age ≤ 15 years.